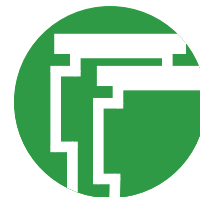




## SERIES 530/531 CAST DUPLEX STRAINER



The Series 530/531 Cast Duplex Strainer provides continued and dependable removal of unwanted solids from fluids. This strainer serves to protect valves, pumps, meters, spray nozzles, and various other equipment. It is often used to ensure product purity in such industries as gas, petroleum, paper, biofuels, and power plants. A duplex strainer is used in applications where fluid flow cannot be interrupted when the basket is removed for cleaning. It maintains a continuous flow by utilizing two separate basket chambers with integral valves to direct flow into one of the basket chambers.

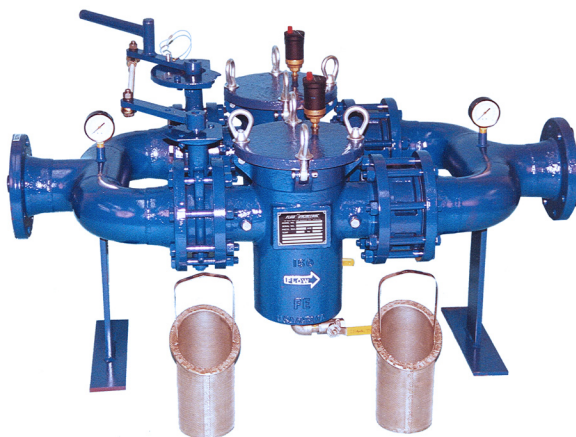


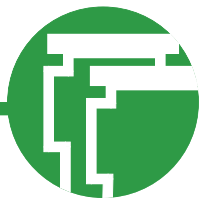
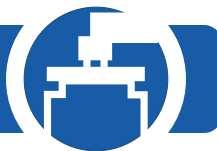
The Series 530/531 is a compact unit, in-line inlet/outlet connections, which enables easy piping and variable strainer placement. Chamber change over is accomplished quickly and easily. A single lever controls the positive sealing butterfly valves, changing the fluid flow.

Built as a standard model unit, the Series 530/531 is also flexible to meet the individual needs of the customer, and varying application requirements. It is available in a cast iron, cast steel, and cast stainless steel and its design is superior for corrosive, hazardous, or low specific gravity fluid applications.

### STANDARD DESIGN

- Cast strainer body with quick opening style cover
- 316 stainless steel basket with perforated (1/32", 1/16", 1/8", 5/32" openings)
- Butterfly valve with cast iron body Buna-N seats, ductile iron disc, and stainless steel stem (Series 530 only)
- Check valves (Series 530 only)
- Lever operated valves with inter-connected linkage (Series 530 only)
- 3-way Diverter valves (Series 531 only)
- Lever operated valves (Series 531 only)
- Design pressure 150 psig @ 150°F
- Complete package is hydrostatically tested
- Viton O-ring cover seal





## SERIES 530/531 CAST DUPLEX STRAINER

### STANDARD DESIGN FEATURES

- Compact design allows for low installation cost.
- Efficient design requiring few moving parts and low maintenance costs.
- Simple, easy, and effective switching of flow with positive shut-off.

### OPTIONS AVAILABLE

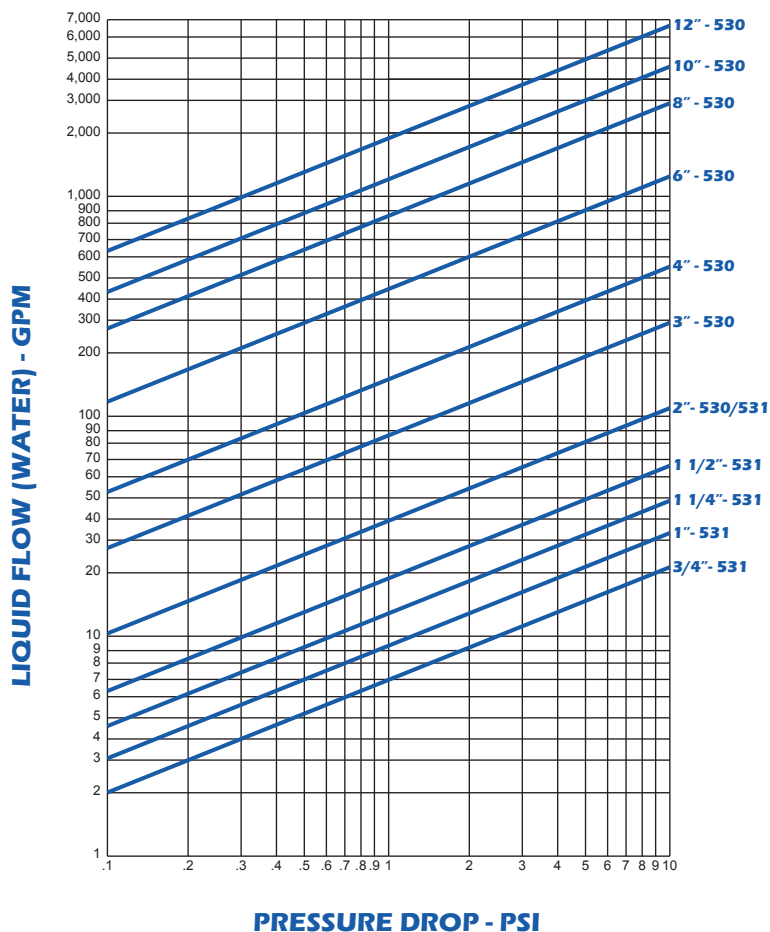
- Variation in flange connection alignment
- ASME Section VIII, Division 1, Code Stamp supplied with complete material traceability
- Special internal and external coating
- Cover lift (davit) assembly (Series 530 only)
- Quick opening hinged covers (Series 530 only)
- Basket material of monel, and others
- Mesh lined baskets
- Vent and drain valves
- Support legs

### Typical Order Specification

Cast Duplex Strainer Package shall be size \_\_\_\_\_ Series 530 with 150# flanged connections or size \_\_\_\_\_ Series 531 with threaded connections as manufactured by Fluid Engineering: Erie, PA.

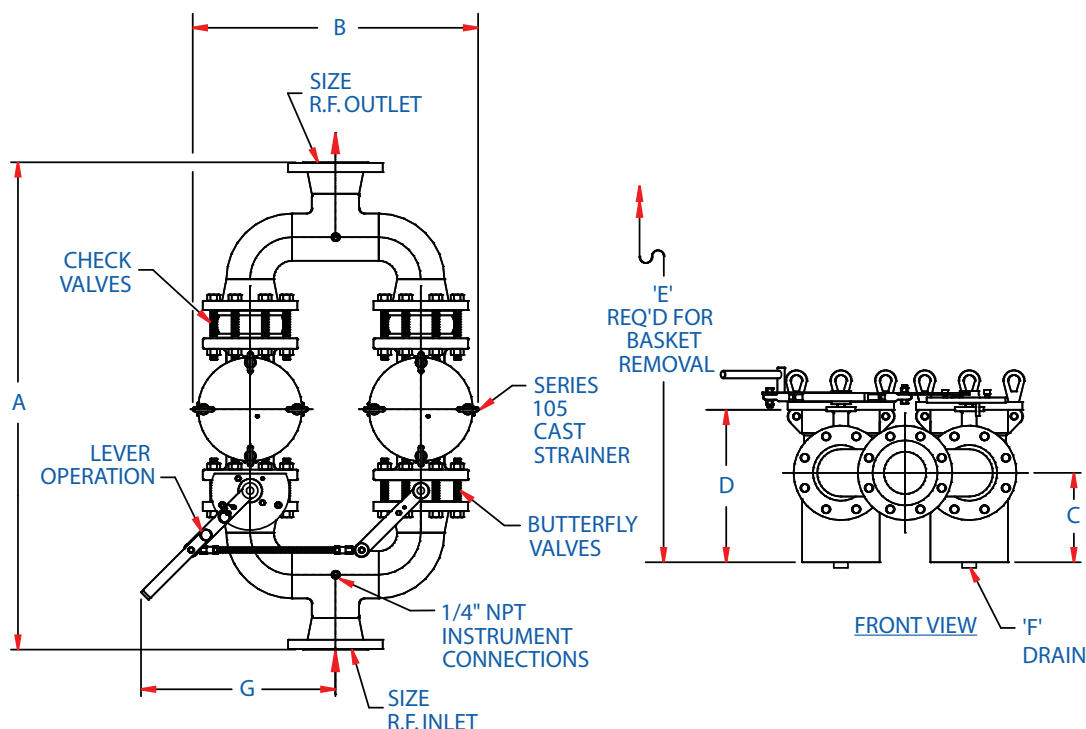
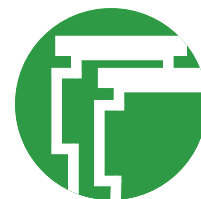
Strainer body shall be cast with quick opening style cover closure. Complete vessel will be suitable for a design pressure of (150 psig) at (100°F). Baskets shall be (304 stainless steel) with (1/32", 1/16", 1/8", or 5/32") perforated openings.

Operating capacity shall be \_\_\_\_\_ GPM at \_\_\_\_\_ psig pressure loss with clean baskets.



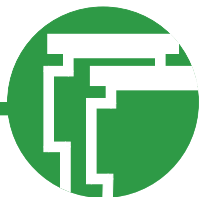
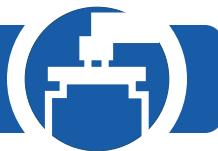


## SERIES 530 CAST DUPLEX STRAINER

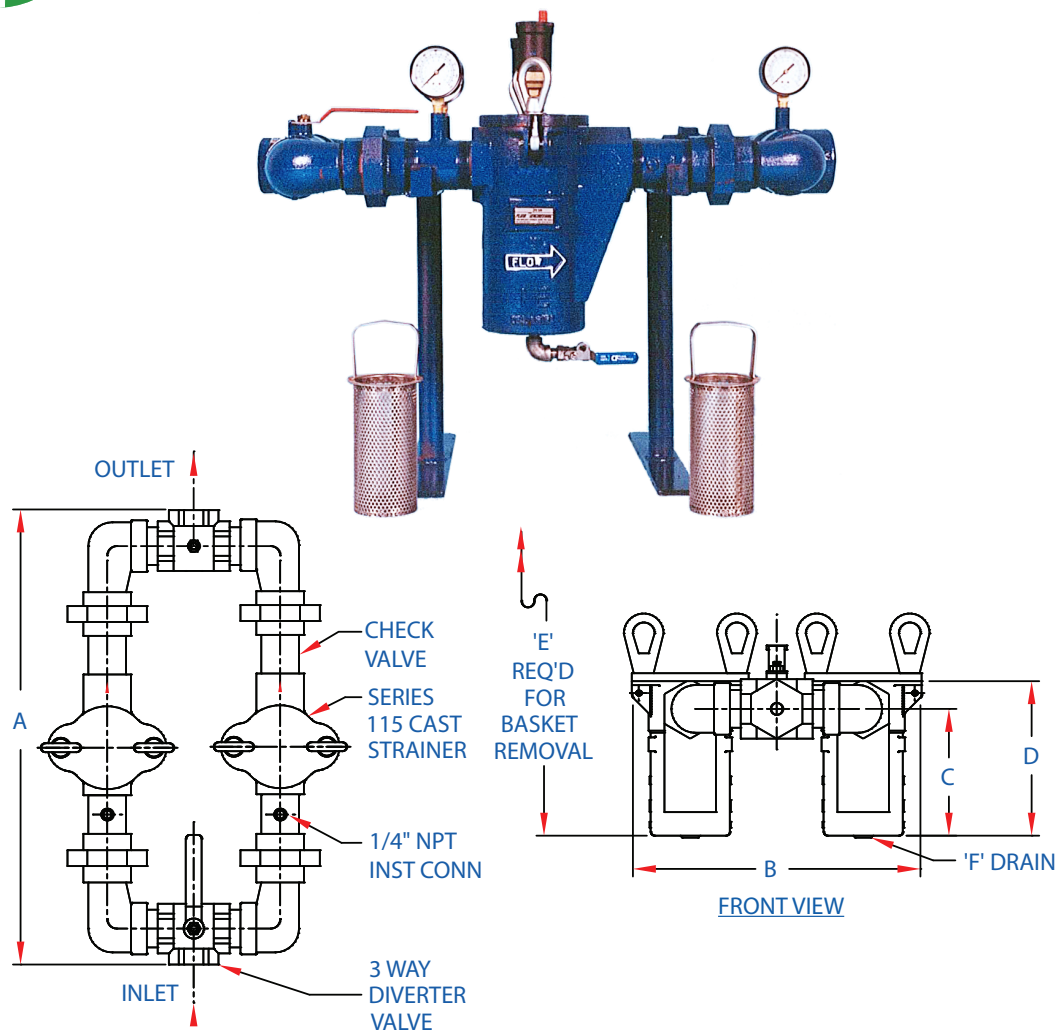


SIZE <sup>1</sup>	A	B	C	D	E	F	G	WEIGHT <sup>2</sup>
2"	36-1/2"	19"	8"	12"	18-3/4"	1/4" NPT	17-1/2"	190 lbs.
50 mm	927.1 mm	482.6 mm	203.2 mm	304.8 mm	476.3 mm	Bottom	444.5 mm	86.1 kg.
2-1/2"	42-1/2"	24"	8-1/2"	16-1/2"	27"	1/2" NPT	19"	310 lbs.
65 mm	1079.5 mm	609.6 mm	215.9 mm	419.1 mm	685.8 mm	Bottom	482.6 mm	140.5 kg.
3"	44-1/2"	26-1/2"	8-1/2"	16-1/2"	27"	1/2" NPT	18-1/2"	360 lbs.
80 mm	1130.3 mm	673.1 mm	215.9 mm	419.1 mm	685.8 mm	Bottom	469.9 mm	163.2 kg.
4"	47"	27-1/2"	8-1/2"	16-1/2"	27"	1/2" NPT	20-1/4"	450 lbs.
100 mm	1193.8 mm	698.5 mm	215.9 mm	419.1 mm	685.8 mm	Bottom	514.4 mm	203.9 kg.
5"	55"	34-1/2"	9-3/8"	18-1/4"	30"	1/2" NPT	22"	615 lbs.
125 mm	1397.0 mm	876.3 mm	238.1 mm	463.6 mm	762.0 mm	Side	558.8 mm	278.7 kg.
6"	60-1/2"	38"	10-1/4"	19-1/2"	32"	1/2" NPT	23-1/2"	795 lbs.
150 mm	1536.7 mm	965.2 mm	260.4 mm	495.3 mm	812.8 mm	Side	596.9 mm	360.3 kg.
8"	75"	47-1/2"	13-1/4"	24"	41"	1/2" NPT	27"	1290 lbs.
200 mm	1905.0 mm	1206.5 mm	336.6 mm	609.6 mm	1041.4 mm	Side	685.8 mm	584.6 kg.
10"	86-1/2"	57-3/4"	17"	29"	50"	1/2" NPT	30-1/2"	2090 lbs.
250 mm	2197.1 mm	1466.9 mm	431.8 mm	736.6 mm	1270.0 mm	Side	774.7 mm	947.2 kg.
12"	90-1/2"	68-1/4"	19-3/4"	33"	58"	1/2" NPT	34"	3250 lbs.
300 mm	2298.7 mm	1733.6 mm	501.7 mm	838.2 mm	1473.2 mm	Side	863.6 mm	1472.9 kg.

Note: (1) Larger models use handwheel in place of lever arm. (2) Weights are approximate. Dimensions subject to change without notice, apply for certified drawings. Please consult the FE Sales Department or your local sales representative.



## SERIES 531 CAST DUPLEX STRAINER



SIZE	A	B	C	D	E	F	WEIGHT <sup>1</sup>
3/4"	22-1/2"	11-5/8"	5"	8-3/4"	12"	1/4" NPT	45 lbs.
20 mm	571.5 mm	295.3 mm	127.0 mm	222.3 mm	304.8 mm	1/4" NPT	20.4 kg.
1"	21-1/2"	12"	5"	8-3/4"	12"	1/4" NPT	55 lbs.
25 mm	546.1 mm	304.8 mm	127.0 mm	222.3 mm	304.8 mm	1/4" NPT	24.9 kg.
1-1/4"	24-3/4"	15-3/4"	8"	12"	18-1/2"	1/4" NPT	85 lbs.
32 mm	628.7 mm	400.1 mm	203.2 mm	304.8 mm	469.9 mm	1/4" NPT	38.5 kg.
1-1/2"	26-3/4"	16-1/2"	8"	12"	18-1/2"	1/4" NPT	95 lbs.
40 mm	679.5 mm	419.1 mm	203.2 mm	304.8 mm	469.9 mm	1/4" NPT	43.1 kg.
2"	29-3/4"	18-1/4"	8"	12"	18-1/2"	1/4" NPT	110 lbs.
50 mm	755.7 mm	463.6 mm	203.2 mm	304.8 mm	469.9 mm	1/4" NPT	49.9 kg.

Note: (1) Weights are approximate. Dimensions subject to change without notice, apply for certified drawings. Please consult the FE Sales Department or your local sales representative.

**"Engineered Products for Demanding Applications, Performance, and Service"**